

C-SERIES CARBON STEEL PV MOUNTING SYSTEM

Brief Introduction

Grace Solar have introduced new C-shaped steel multi-function rolling machine, open-post steel rolling machine, large tonnage bending machine and various tonnage punch, drilling machine and welding equipment. Combined with experience in PV mounting system for about 10 years, Grace Solar can provide customers with best cost-effective program according to different site conditions.



Technical Information

Installation Location	Outdoor Ground	Fastener material	Hot-dip galvanized bolt
Panel orientation	Portrait or Landscape	Design standard	ASN/NZ 1170, JIS C8955, ASTM
Solar panel type	Framed or Frameless	Quality assurance	10 Years
Tilt angel	<45 deg	Main Component Material	a. Hot-dip galvanized steel b. Aluminum-Zinc Coated Steel c. Zinc Aluminum-Magnesium Coated Steel
Maximum wind speed	60m/s (3s)		
Maximum snow load	1.4KN/㎡		
Clamp material	Aluminium alloy		

Production Capacity

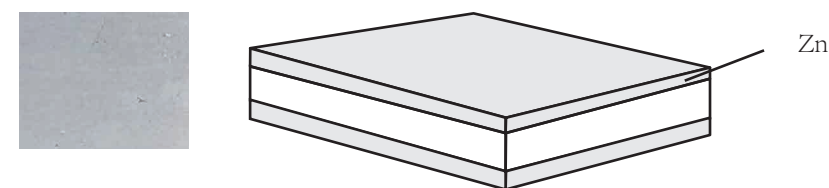
Grace Solar has nearly 20,000 square meters of machining centers and various latest processing equipments, which can produce a variety of products to meet customers' needs.



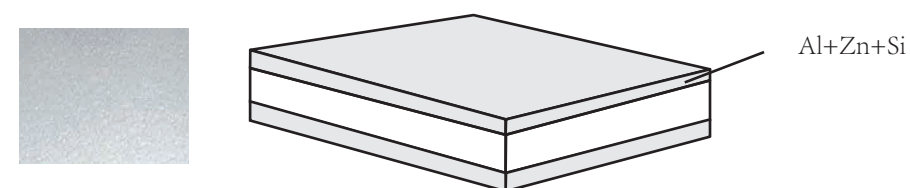
C-shaped steel multi-function rolling machine large tonnage bending machine (available length up to 4.1 meters) Welding workshop Multi-tonnage punch

Materials

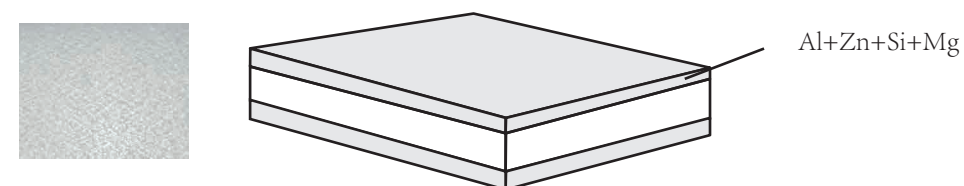
Type a : Hot-dip galvanized steel



Type b : Aluminum-Zinc Coated Steel



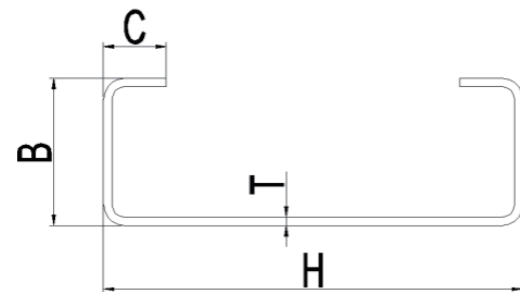
Type c : Zinc Aluminum-Magnesium Coated Steel



Product Features

a C-shaped steel multi-size optional

Grace Solar has C-shaped steel multi-function molding machine, which can design the optimal C-shaped steel size according to customer's site conditions;



H	60~200MM
B	25~70MM
C	12~20MM
T	1.3~3MM

b High quality material and surface anti-corrosion treatment

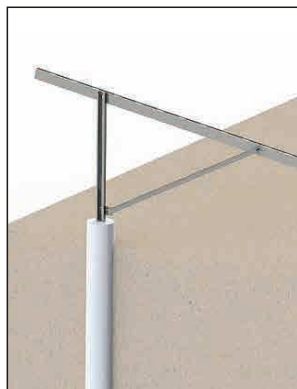


Aluminum-Zinc Coated Steel (Recommended priority)
Surface anti-corrosion treatment, excellent anti-corrosion ability, can be directly processed and formed, the surface is beautiful

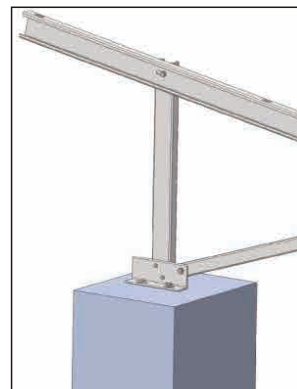


Hot dip galvanized steel
Hot-dip galvanizing after forming, the surface is thicker, but appearance is not very beautiful.

c Four foundation types



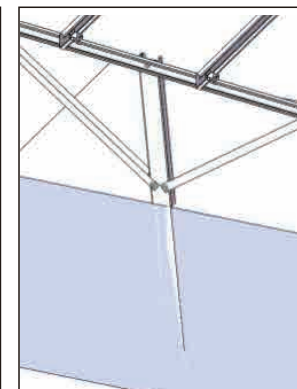
Concrete pre-buried foundation



Independent concrete foundation



Ground Screw foundation

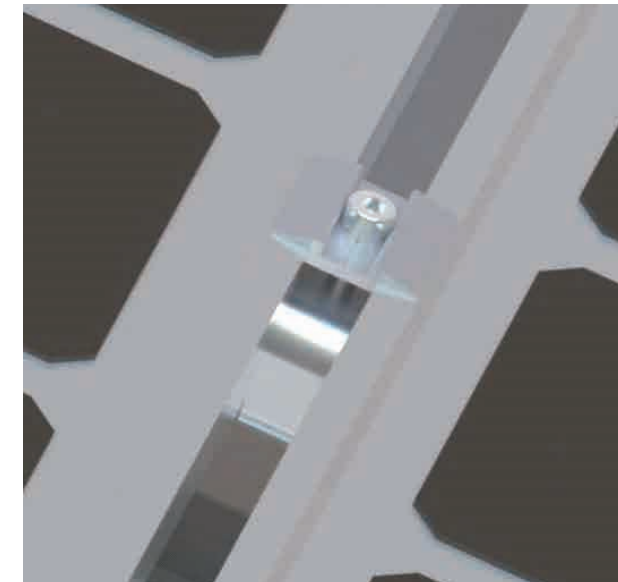


Pile foundation

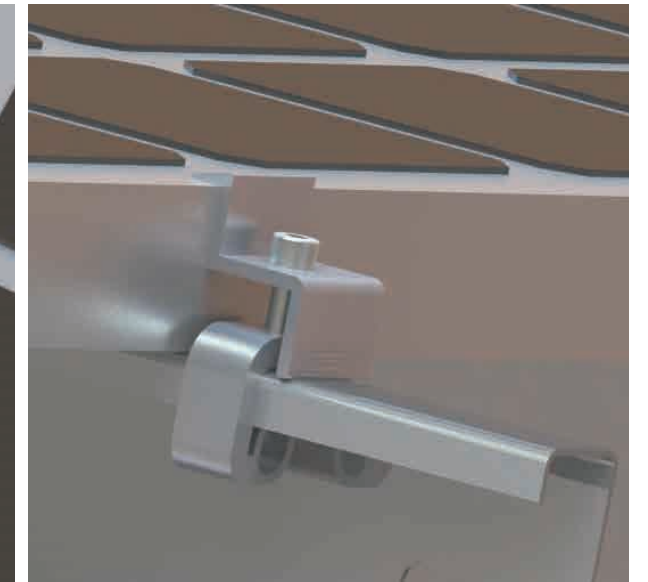
Accessories

a Solar panel fixing method Lock from top to bottom (Clamp)

The default selection is fixed by clamps, which is easy to install and highly adjustable.

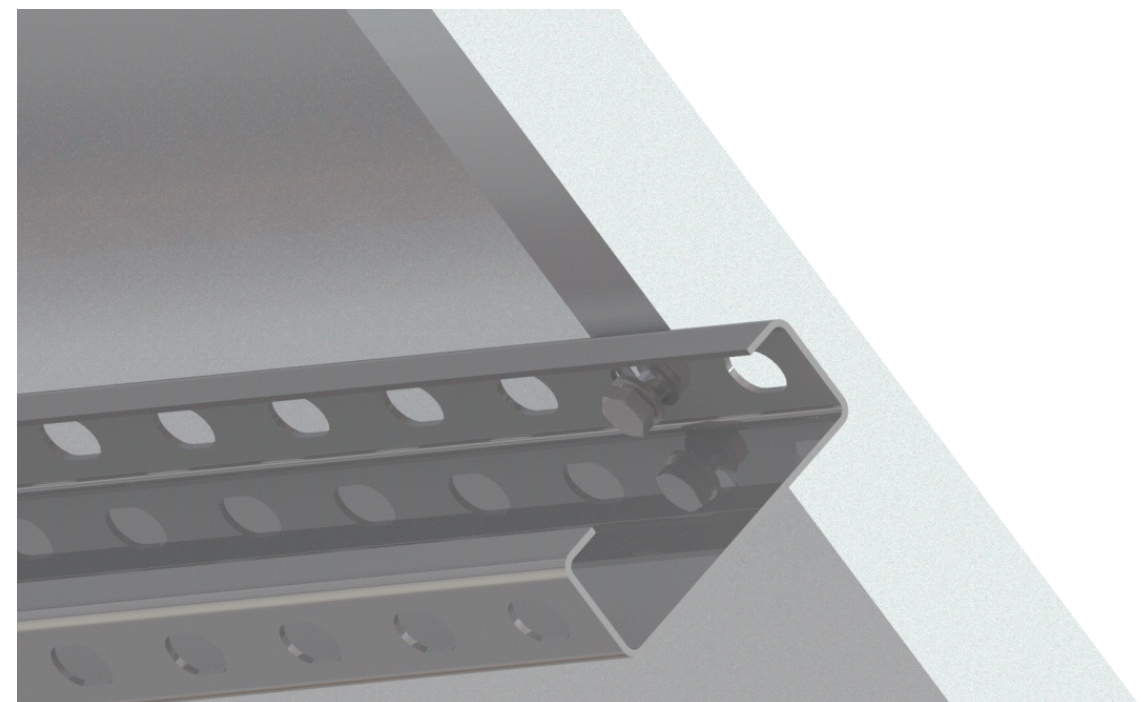


Inter Clamp



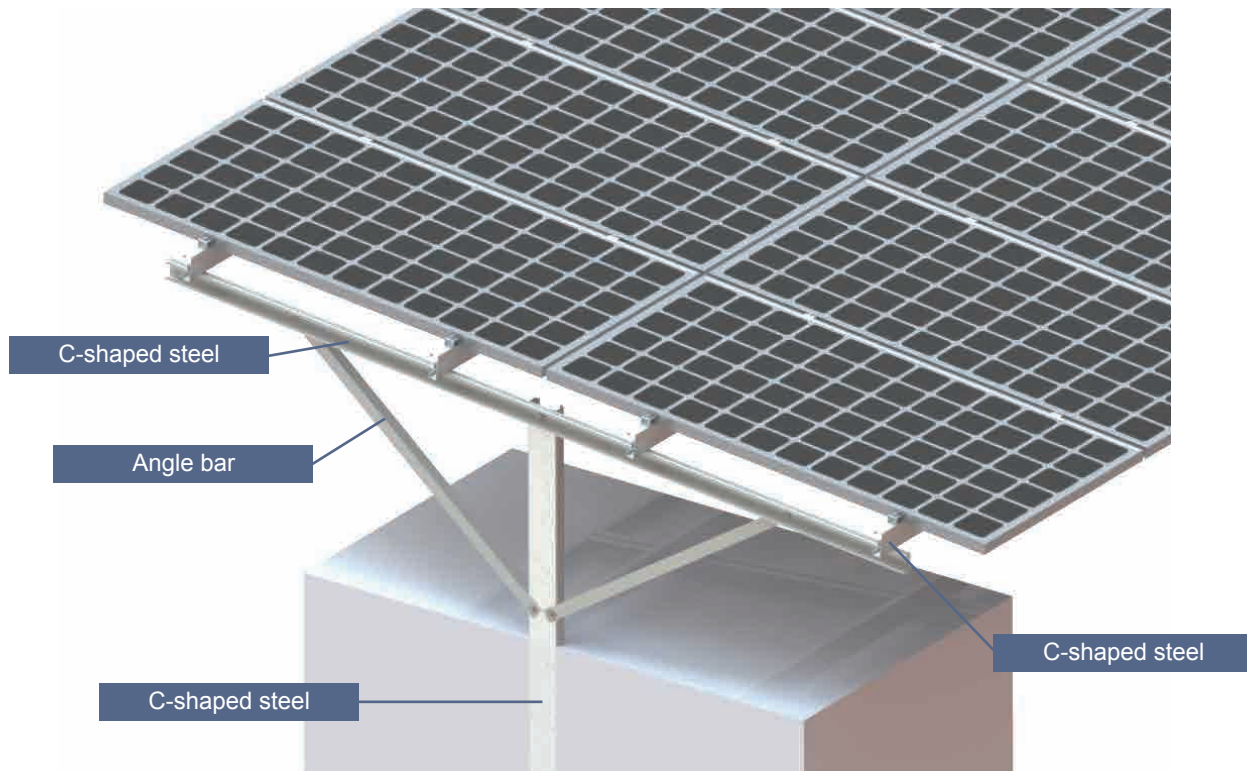
End Clamp

b Lock the bottom holes of solar panels with bolts

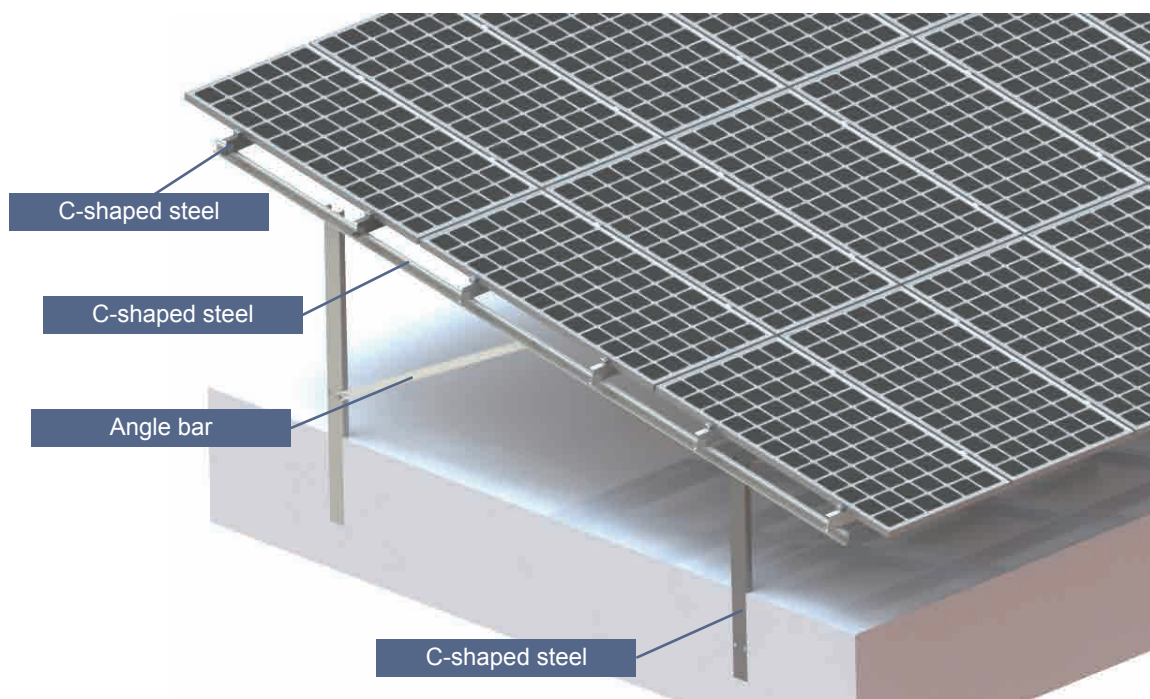


Product Application Field

Single Pile (Portrait)
 Suitable for 2 panels to be panels vertically (2 row x n column)

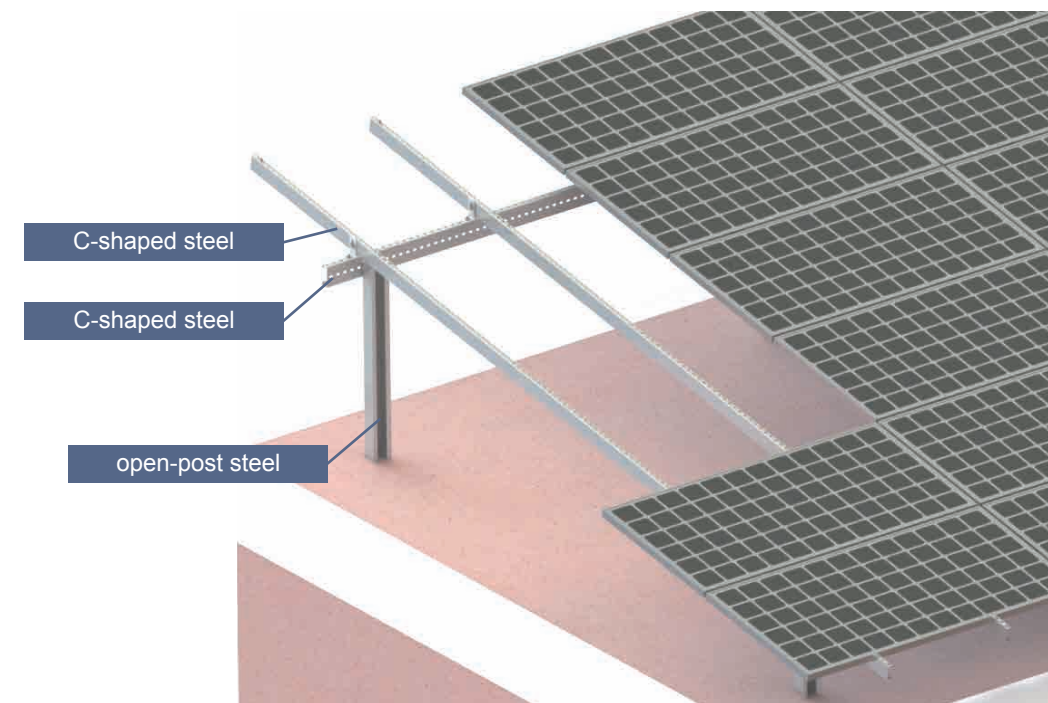


Double Pile (Portrait)
 Suitable for 3 panels to be placed vertically (3 row x n column)



Product Application Field

Double Pile (Landscape)
 Suitable for four or six panels placed horizontally



Ground Screw (Landscape)
 Suitable for placing four panels horizontally

